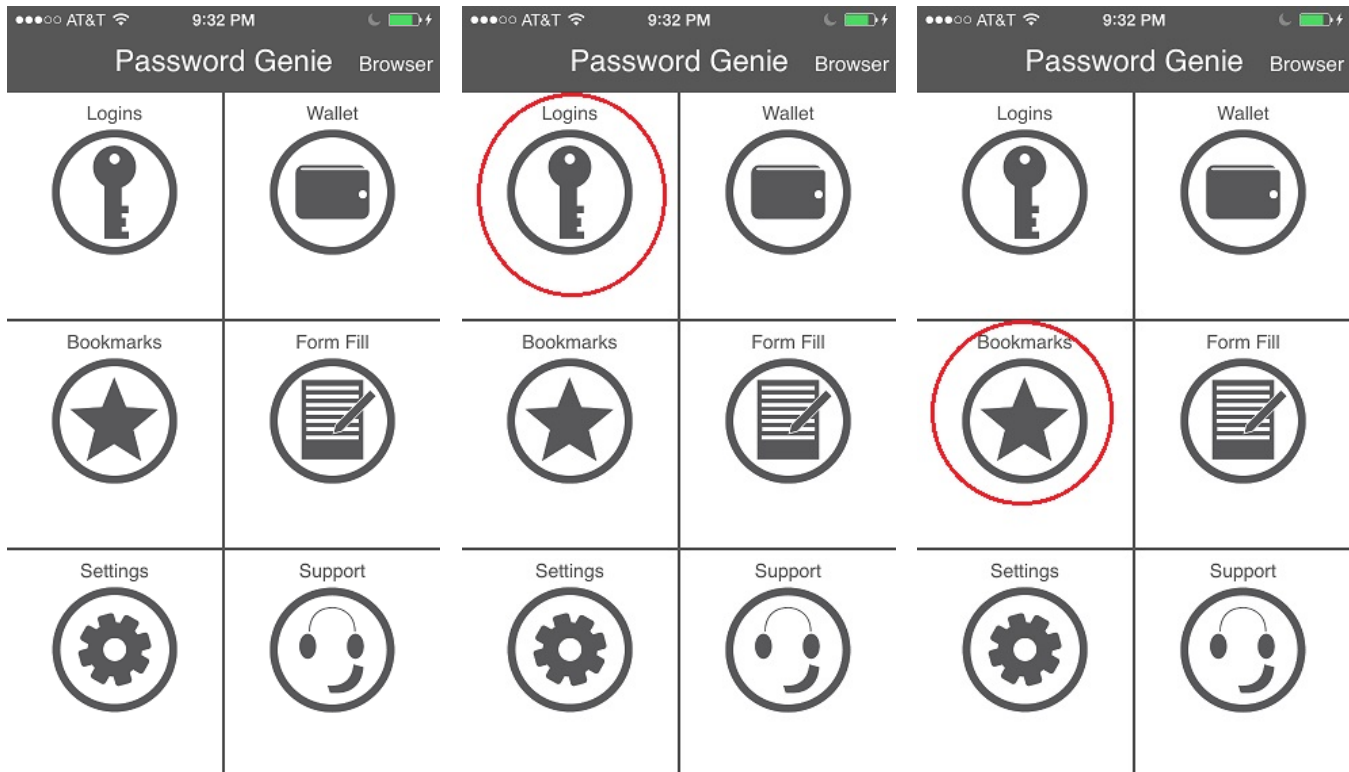


Password Genie iOS Quick Start Guide

You've installed Password Genie iOS so now what?

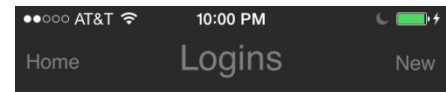
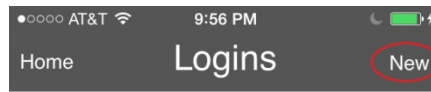
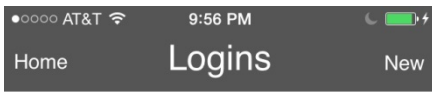
You'll see the Password Genie Main Menu after installation. From here you will see Logins, Wallet, Bookmarks Formfill Settings and Support. You can also see statuses of strength of passwords, Expired Credit Cards and Birthday Reminders.



First thing you'll want to do with Password Genie is to create Logins The Quickest way to create a login is to choose the Logins tab (see above) and follow these easy steps below in creating your first login.

Logins:

Once in the Logins tab you will be greeted by the landing page for Logins. This page provides the steps on what is next. We want to create a New Login, once New is selected you have the choice of creating a Login Entry or a New Folder. Let's choose Login Entry to continue our quest in creating a Saved Login.



Password Genie allows you to view your Login entries at the touch of a button.

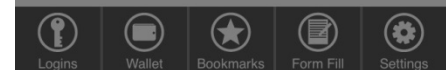
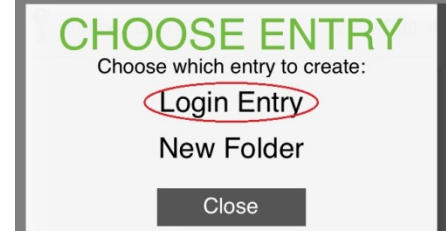


You currently don't have any entries saved. To add an entry, press 'New'.

Password Genie allows you to view your Login entries at the touch of a button.



You currently don't have any entries saved. To add an entry, press 'New'.



Once Login Entry is selected you will be automatically taken to the New Login -> Create Entry screen. Here you will see the necessary fields to complete a Login.




Create Entry

Saved Login Description

Website URL

Username/Email

Password 

Notes

Choose Folder

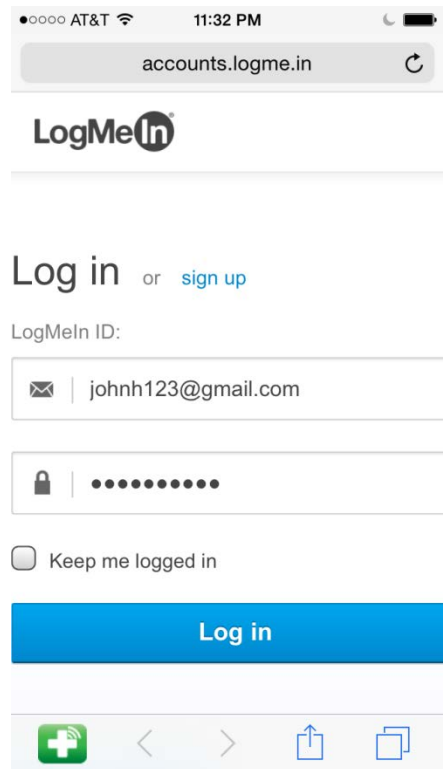
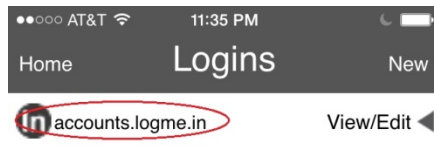
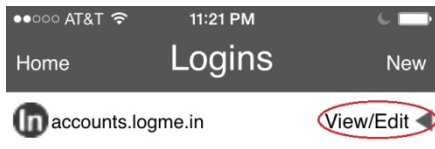
Generate Password

Unmask Password

- Saved Login Description (give you Login a name for easy recognition)
- Website URL (web page address goes here. EXAMPLE: <https://mail.google.com>)
- Username/Email (johnH123@gmail.com)
- Password (Includes Password Strength Rater. Password Genie will report if your Password is safe enough.)
- Notes (Enter anything you wish here)
- Folder Options (for simple organization)
- Generate Password (That's right Password Genie can create Passwords for you!!)



Once your desired fields are filled out, Press Save button to complete the login entry. After the login has been saved the information will be stored in your Login tab of the Main Menu.



Here you can View/Edit your entry at any time. How to have Password Genie log you into your saved Login Entry? Very Simple.... press on the URL (of the desired login) in the Logins section and the built in Password Genie Browser will do the rest.

Easy, right? Password Genie can do a lot more. Visit our How To Guides to learn about all the features with Password Genie including Bookmarks and Formfill. And as always, all SecurityCoverage apps are supported by US-based techs, so if you ever have any questions don't hesitate to ask.