

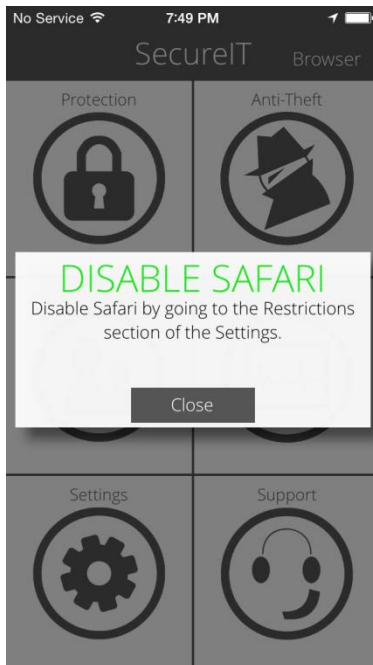
## SecureIT iOS QuickStart Guide

Congratulations! SecureIT is installed and is working full-time to keep your device safe from virus and malware threats. Now what?

You'll see SecureIT's main menu after installation. From here you can setup your anti-theft features, enable browsing protection, adjust your parental controls, and monitor your device's activity.

The first thing you'll want to do is disable Safari so SecureIT will act as your device's default web-browser followed by setting up your anti-theft features. We'll walk through how simple it is to do both below. We'll also show you a short walk-through of setting up your parental control options and monitoring your device's activity.

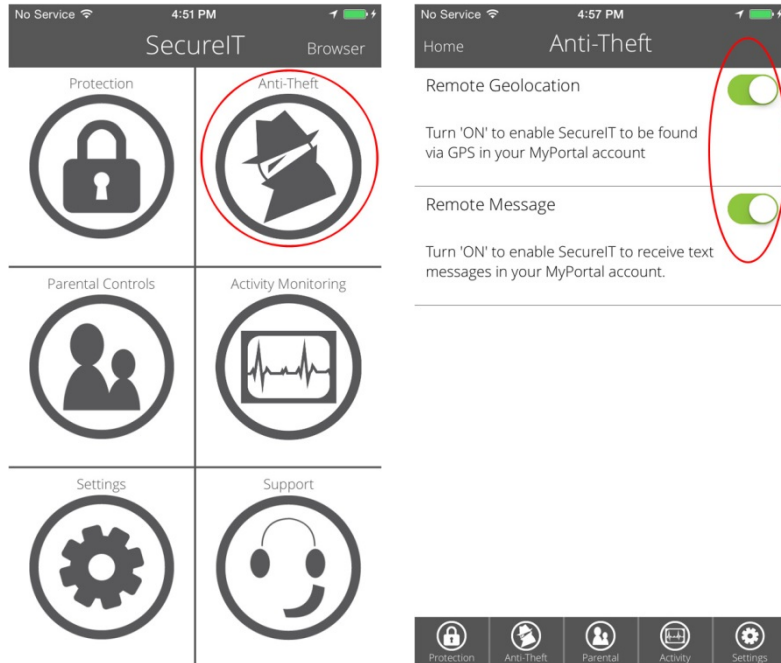
### DISABLING SAFARI



Upon installing SecureIT, you will see a prompt indicating that you will need to disable Safari. In order for SecureIT's Web Security and Parental Controls to work properly, you must use SecureIT's built-in web browser.

- **Press Settings** from your device's home screen.
- **Press General** under Settings.
- **Press Restrictions** under the General screen.
- **Press Enable Restrictions** to turn app restriction on. (If this is already enabled, skip this step.)
- **Disable the Switch** for Safari under ALLOW.
- **Safari is now disabled.**

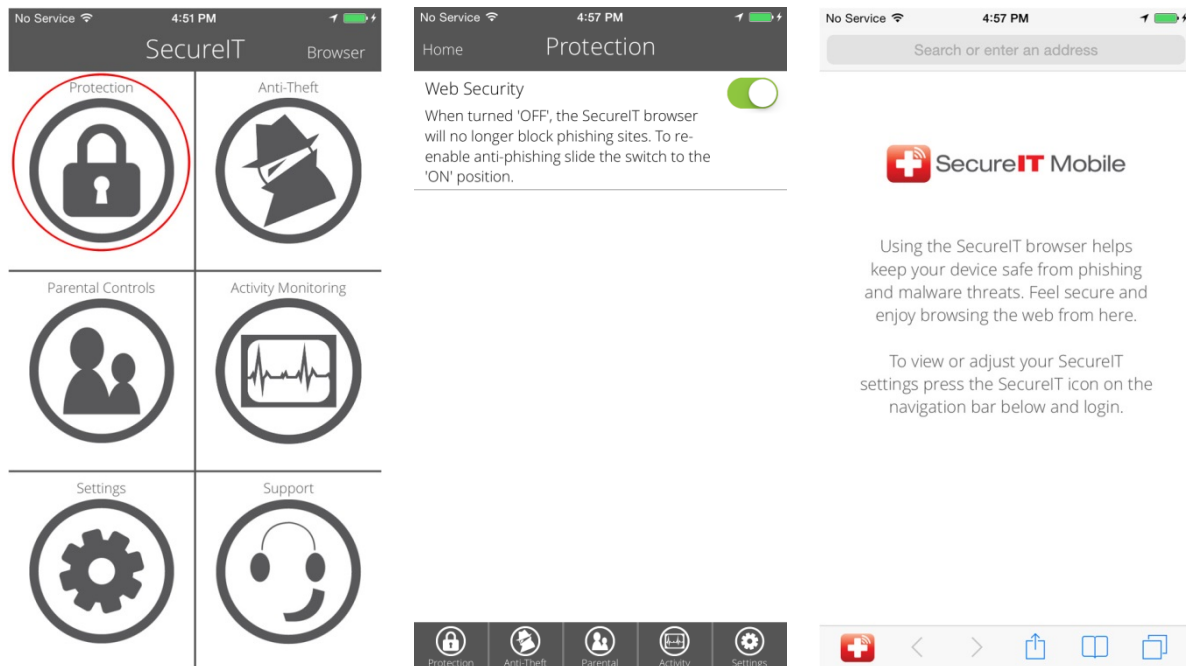
## ENABLE ANTI-THEFT (Locate, Lock or Wipe)



Didn't enable anti-theft during installation? Not to worry, you can change these settings at any time.

- Press **Anti-Theft** from the main menu.
- Slide switches **ON** for all features you wish to activate.

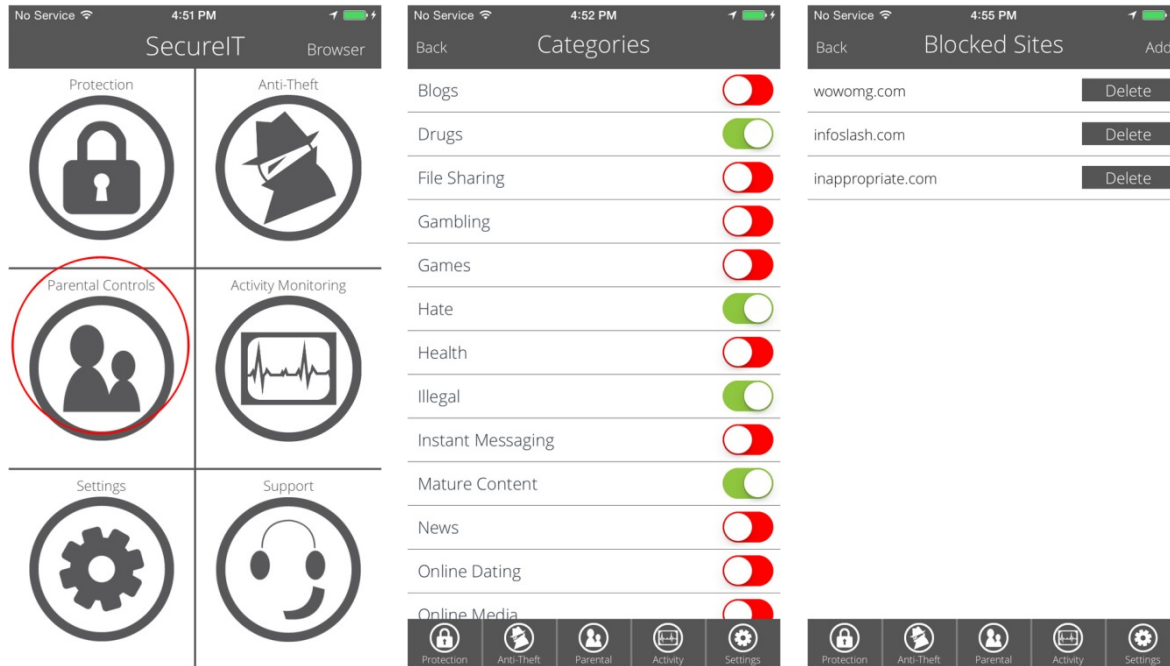
## WEB SECURITY



Web Security protects you from malicious Phishing Attacks when using the SecureIT browser.

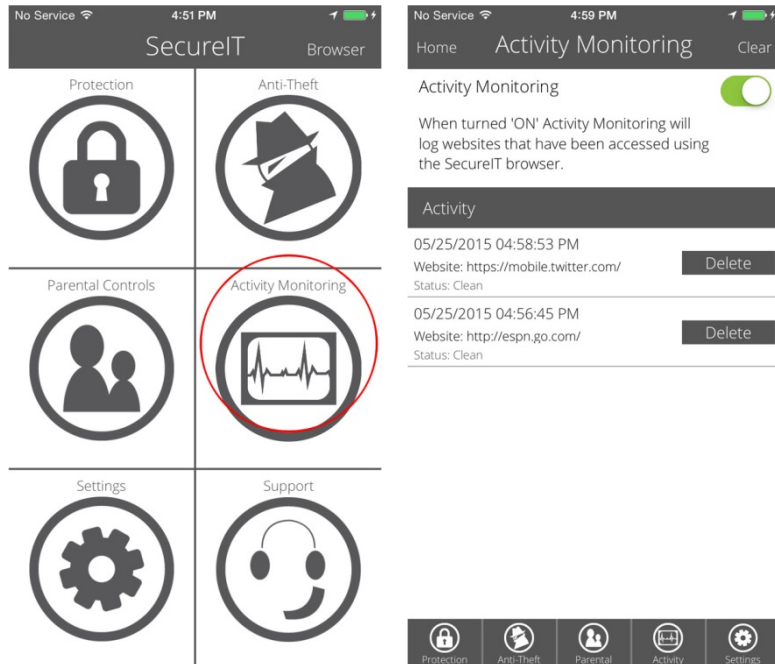
- Press **Protection** from the main menu.
- Slide switches **ON** if you wish to enable Web Security, or OFF if you wish to disable it.
- Press **Browse** from the main menu, opening up SecureIT's browser to keep you safe while surfing.

## PARENTAL CONTROLS



- Press **Parental Controls** from the main menu.
- Press **Manage or Blocked Sites**: Manage contains the default SecureIT categories; Within Blocked Sites, you can manually add individual sites you wish to be blocked.

## ACTIVITY MONITORING



- Press **Activity Monitoring** from the main menu.
- **Activity Monitoring** will show when Web Security is enabled or disabled and when a site has been blocked by Web Security/Parental Controls.

Easy, right? SecureIT can do a lot more. Visit our [How To Guides](#) to learn about all the features available with SecureIT, including how to use your [MyPortal](#) account to remotely locate, message, alert, lock, and wipe your lost or stolen device, how to audit your apps for suspicious behavior, and how to ensure your device stays protected.

And as always, all SecurityCoverage apps are supported 24/7/365, so if you ever have any questions [don't hesitate to ask](#).